



Access a New Level of
Digital Architectural Glass

Design Freedom and Functionality Control

The latest innovations in glass printing technology open new opportunities to combine boundless creativity with highly controlled functionality. Full expression of vision and outstanding budget-smart performance delivery are now possible with digital ceramic glass printing.

- **Easy implementation**

Of any pattern or design, with unlimited colors, and high resolution for fine details.

- **Durability and accuracy**

Inks are fused into the glass, providing unmatched resistance to scratching, acid, UV light and weather. Precise micro-drop printing allows accurate photorealistic and graphic designs.

- **A new medium for expression**

The ability to combine transparent, translucent and opaque details in any way, full freedom in colors and shades, and the possibility to create double-vision designs for different front and back experiences, are moving glass printing into the realm of tools for design.

Outstanding Functional Performance

Dip-Tech's solution for digital ceramic glass printing meets complex functional performance requirements. It enables control of all special elements of architectural and designed glass:

- **Translucency/opacity**
- **Light diffusion and transmission**
- **Energy efficiency**
- **Privacy levels**
- **Slip resistance**
- **Anti-bird collision**

A NEW ERA

In Digital Ceramic Glass Printing

Sustainable Architecture

Dip-Tech's printed glass meets environmentally responsible architecture goals:

- The glass is recyclable and offers eco-friendly functionality.
- Using this technology can assist with LEED and other environmental certification.
- The printed glass contains no toxic heavy metals.
- It is an excellent building material for preventing bird collision.
- Printing a new design on glass panels is well-suited to urban renewal projects where redesigning only parts of buildings is preferable to demolition and rebuilding.
- Over time, if elements need to be replaced or added, individual glass panels can be printed and perfectly matched to the existing panels, eliminating the cost and waste of more extensive refurbishment.

Budget-Smart Design

From the initial design stage, through the value engineering process, Dip-Tech assists architects, designers and consultants with calculating the long-term savings enabled by digital ceramic printed glass. If needed, Dip-Tech helps evaluate alternative ways of using digital glass printing, so that printed glass elements can be kept in a project, even as budgets change over time.



ST-LAURENT SPORTS COMPLEX

Quebec, Canada

ARCHITECT

**Saucier+Perrotte Architectds /
Hughes Condon Marler Architects**

PRINTED BY

Laurier, Canada

PHOTOGRAPHER

Sebastien Forget Major

SPECIFICATIONS

PRINTED AREA

1100sqm / 11840sqft

NUMBER OF PANELS

400

COLORS

Dip-Tech White

GLASS TYPE

6mm ultra clear





ROUEN MEDICAL TRAINING CENTER

Pouen, Normandie, France

ARCHITECT

Vib architecture, Murielle MONIER

PRINTED BY

Macocco

SPECIFICATIONS

PRINTED AREA

1200sqm / 12916sqft

NUMBER OF PANELS

750

COLORS

Dip-Tech White

GLASS TYPE

**High performance Insulating
Glass units, argon filled spacer,
and low-E laminated pane**





MONTMAGNY COURTHOUSE

Montmagny, Canada

ARCHITECT

CCM2+

PRINTED BY

Laurier Glass

PHOTOGRAPHER

Stephane Groleau

SPECIFICATIONS

PRINTED AREA

245sqm / 2637sqft

NUMBER OF PANELS

170

COLORS

Dip-Tech Digital Mix

GLASS TYPE

6 mm tempered





SHENTON HOUSE

Western Australia

ARCHITECT

Meyer Shircore Architects

PRINTED BY

Cooling Brothers Glass Company

PHOTOGRAPHER

Trevor Soh David Morcombe

SPECIFICATIONS

PRINTED AREA

190sqm / 2045sqft

NUMBER OF PANELS

33

COLORS

Dip-Tech Digital Mix

GLASS TYPE

8 mm toughened





UTC CAMBRIDGE

Cambridge, England

ARCHITECT
Hawkins Brown

ARTIST
Jo Chapman

PRINTED BY
Toughglaze

SPECIFICATIONS

PRINTED AREA
45sqm / 484sqft

COLORS
Dip-Tech Digital Mix





WTC P-HUS

Lund, Sweden

PRINTED BY
JYC - POBO Group

SPECIFICATIONS

PRINTED AREA
2677sqm / 28819sqft

COLORS
Dip-Tech Digital Mix





VAN WIJNEN HARDERWIJK WEESP

Noord-Holland The Netherlands

ARCHITECT
RS Architects

PRINTED BY
Balink Glass Aluminium

SPECIFICATIONS

PRINTED AREA
55sqm / 591sqft

NUMBER OF PANELS
15

COLORS
Dip-Tech Digital Mix

GLASS TYPE
8 mm low iron tempered





HE FEI SALES CENTER

An hui, China

ARCHITECT

Wuxi Qing Gong Design institute

PRINTED BY

Hua Yue Glass

SPECIFICATIONS

PRINTED AREA

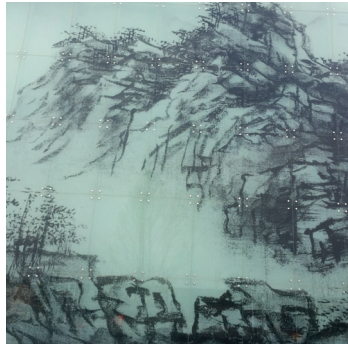
1300sqm / 13993sqft

COLORS

Dip-Tech Black

GLASS TYPE

12mm low-iron glass





AL JAMEA TUS SAIFIYAH

Karen ,Nairobi County

ARCHITECT

FX Fowle Architects

PRINTED BY

Impala Glass

PHOTOGRAPHER

Huzeifa Hakimi - Imagious Studio

SPECIFICATIONS

PRINTED AREA

800sqm / 8611sqft

NUMBER OF PANELS

400

COLORS

Dip-Tech Digital Mix

GLASS TYPE

**8mm and 10mm clear toughened
with digital printing**





7TH ST. THOMAS

Toronto, Ontario

ARCHITECT
Hariri Pontarini Architects

PRINTED BY
Standard Bent Glass

SPECIFICATIONS

PRINTED AREA
706sqm / 7600sqft

NUMBER OF PANELS
240

COLORS
Dip-Tech White





MANSUETO LIBRARY

Chicago, USA

ARCHITECT

Murphy & Jahn

PRINTED BY

Flachglas Wernberg GmbH, Germany

SPECIFICATIONS

PRINTED AREA

2675sqm / 28793 sqft

NUMBER OF PANELS

700 unique panels

COLORS

Dip-Tech Black and White

GLASS TYPE

Tempered, laminated, IG Units





THINK WHOLE PERSON HEALTHCARE

Nebraska, USA

ARCHITECT

Zero-G

PRINTED BY

Insulite

PHOTOGRAPHER

David Rowland

SPECIFICATIONS

PRINTED AREA

300sqm / 3229sqft

NUMBER OF PANELS

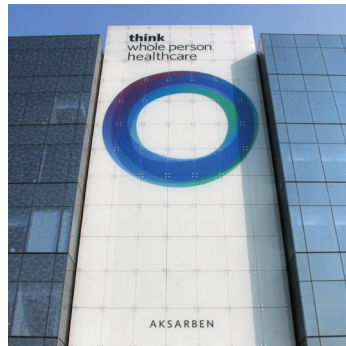
90

COLORS

Dip-Tech Digital Mix

GLASS TYPE

Ultra Clear



think
whole person
healthcare



ORION

Dubnica nad Váhom, Slovakia

ARCHITECT
Infinity Trust

PRINTED BY
Kovac

SPECIFICATIONS

PRINTED AREA

Entire project - 5000sqm / 53820sqft

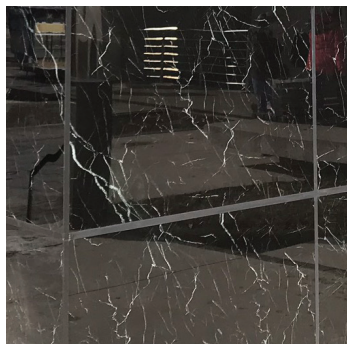
Facade - 2600sqm / 27986sqft

Balconies - 250sqm / 2691sqft

Interior glass - 2100sqm / 22604sqft

COLORS
Dip-Tech Digital Mix

GLASS TYPE
6mm, 8mm, 6mm diamond





ABBEYWOOD SHOPPING PLAZA

Bristol, United Kingdom

ARCHITECT

Haskoll Architects

PRINTED BY

Toughglaze

SPECIFICATIONS

PRINTED AREA

220sqm / 2368sqft

NUMBER OF PANELS

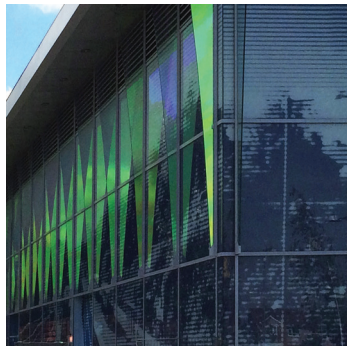
48

COLORS

Dip-Tech White and Dark Blue

GLASS TYPE

10mm low iron





818 PLAZA

Shanghai China

ARCHITECT

**Shanghai Jianke Architectural Design
Institute Co.,Ltd**

PRINTED BY

Hua Yue Glass

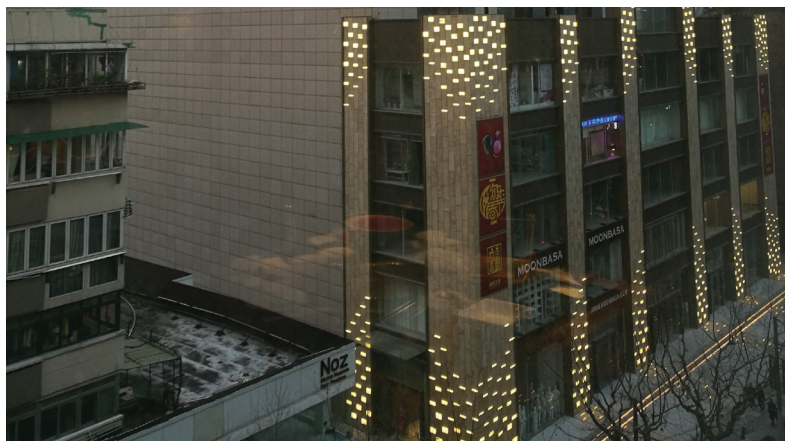
SPECIFICATIONS

NUMBER OF PANELS

590

COLORS

Dip-Tech Green





McDONALDS FUEL STATION

Batumi, Georgia

ARCHITECT
Giorgi Khmaladze Architects

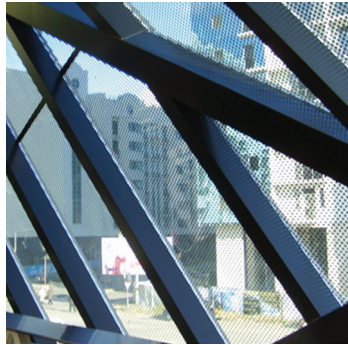
PRINTED BY
Gedik CAM

SPECIFICATIONS

PRINTED AREA
850sqm / 9150sqft

NUMBER OF PANELS
460

COLORS
Dip-Tech Black





ABOUT DIP-TECH

Dip-Tech, a Ferro company, is the world's leading provider of digital glass printing solutions that combine the durability of ceramic inks with the versatility and quality of digital printing. Dip-Tech provides an unmatched and field-proven solution for all exterior and interior glass printing applications. With a single solution, Dip-Tech helps architects express their artistic vision in façades, curtain walls, windows, dividers, and other glass elements and also meet the full range of functional requirements and sustainable architecture goals.

LAURIER

153 boul. Laurier, # 300

Laurier-Station, QC

Canada G0S 1N0

TEL : 418 728.2023 | 877 728.2023

info@laurier.net

www.laurier.net

www.dip-tech.com/Project_Gallery

www.dip-tech.com | sales@dip-tech.com



©2018 Dip-Tech Digital Printing Technologies Ltd. All rights reserved. Dip-Tech, the Dip-Tech logo, and Dip-Tech Spectrum are trademarks or registered trademarks of Dip-Tech Digital Printing Technologies Ltd. and may be protected in certain jurisdictions. All other names and logos are the property of their respective owners. All information is subject to change without notice.